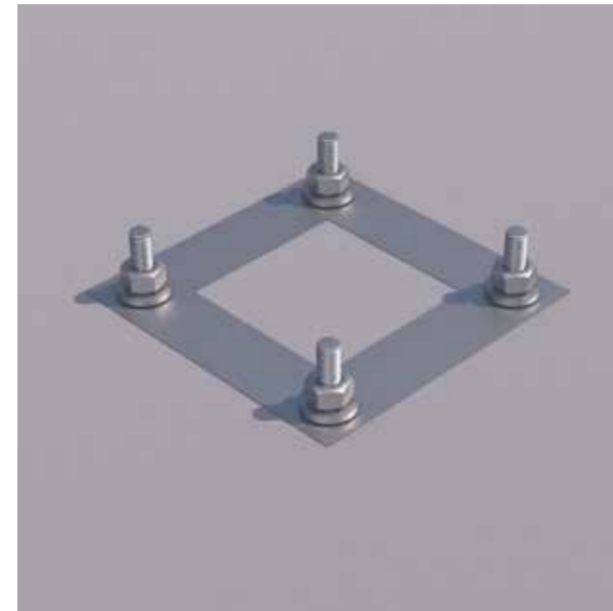
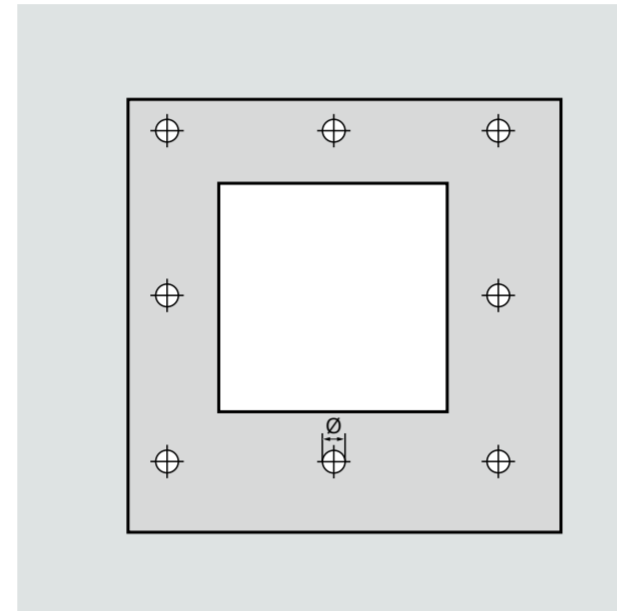
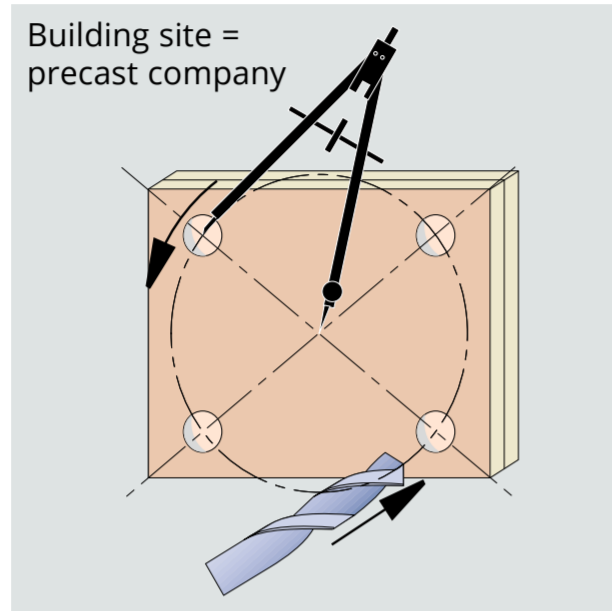


Installation of foundation anchors on the building site

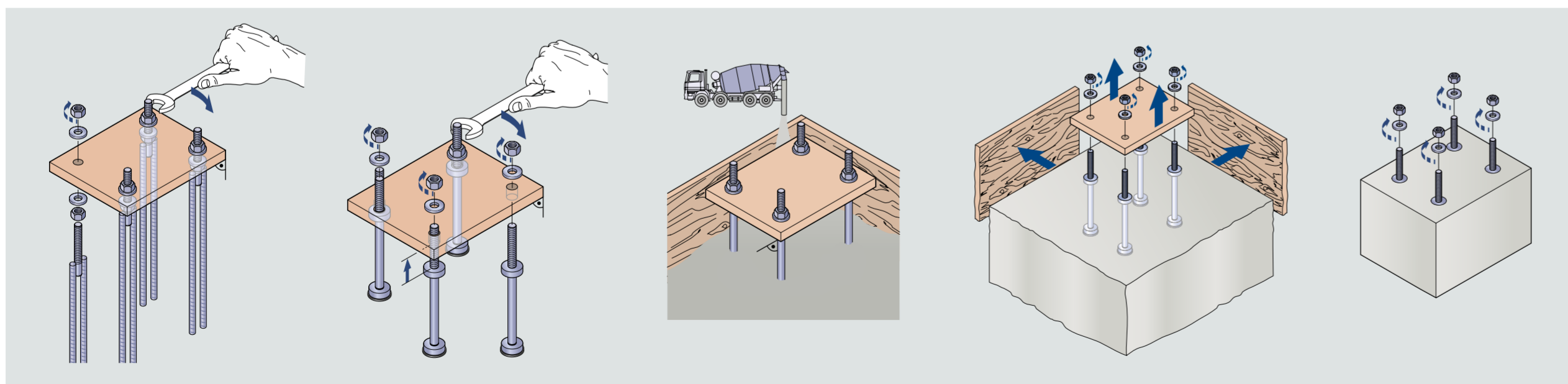
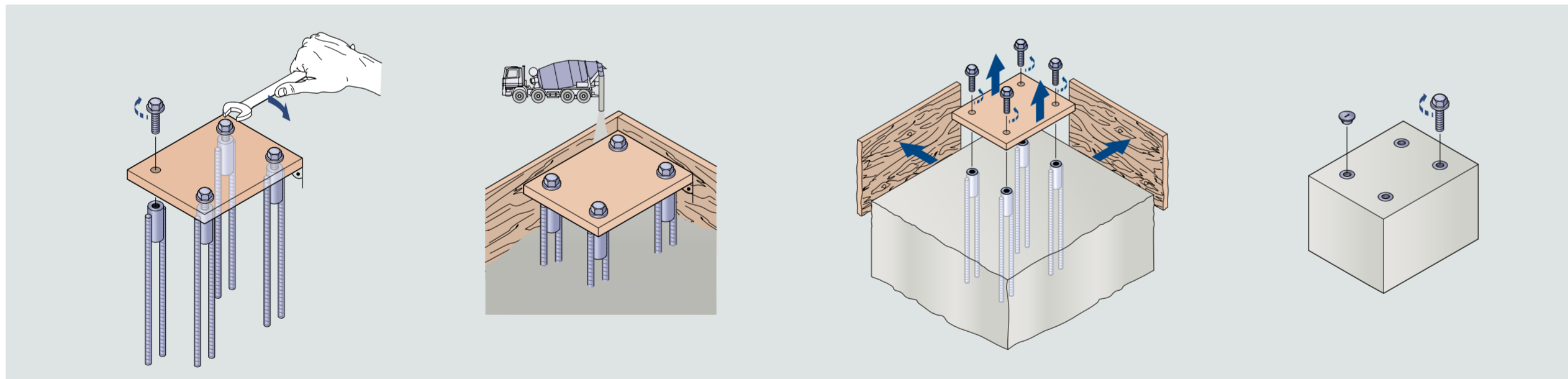


1) Template

Use a precisely fitting and dimensionally stable template. Correspondence to the column shoe template from the precast company must be ensured. (Note different bore diameters)

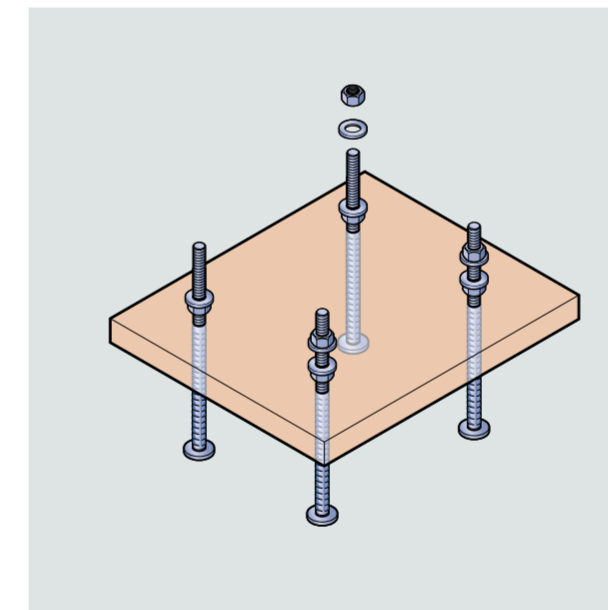


2) Installation of the anchor in the foundation



Ensure exact vertical installation!! Additional fastening of the foundation anchors to the reinforcement if necessary. Movements due to concreting and compaction must be prevented.

3) Checking the anchor position



Check the anchor position and protrusions after concreting according to the respective layout specification. Maximum tolerances are to be taken from the below table.

Type	Column shoe hole Ø [mm]	Bolt Ø [mm]	Max. eccentricity [mm]
PCC-16	28	16/20	± 6,0/4,0
PCC-20	30	20/24	± 5,0/3,0
PCC-24	35	24	± 5,5
PCC-27	40	27/30	± 6,5/5,0
PCC-30-1	40	30	± 5,0
PCC-30-2	45	30/36	± 7,5/4,5
PCC-36	53	36/39	± 8,5/7,0
PCC-39-1	55	36/39	± 9,5/8,0
PCC-39-2	55	39/42	± 8,0/6,5